

Contents

The following Help Topics are available:

[Introduction](#)

[How to Play](#)

[Rules](#)

[Main Menu](#)

[Game Menu](#)

[Meet the Players](#)

[Terms](#)

For Help on Help, Press F1

Introduction

MVP Spades is a challenging card game with three difficulty levels. You may play with or without a partner and various options await you. Choose from nine different opponents, with varying skill levels, and the fun is all yours. Don't forget the fun and excitement with modem and network play.

How to Play

To start a new game of MVP Spades, choose the Game menu, then choose New. You will be prompted to choose your partner (if there is team play). You must then choose your two opponents. Their skill levels are listed at the top of the dialog. The first hand will then be dealt. You will be prompted for your bid. See [Rules](#) for information on bidding.

Rules

Players - Four players. May be played in two partnerships.

Cards - A deck of 52 cards. The cards rank (from highest to lowest) A, K, Q, J, 10, 9, 8, 7, 6, 5, 4, 3, 2.

Deal - Players each receive 13 cards.

Bidding - Beginning with the eldest hand, each player then bids the number of tricks he/she expects to win, out of the total possible number of 13 tricks. The bid is added to his/her partner's bid (unless playing without a partner) and thus, constitutes the contract of the partnership. Note: The total number of tricks does not have to equal 13.

Nil Bidding - A player may choose to bid NIL, indicating the desire to win no tricks. After a player bids NIL, he/she has the option to discard 3 cards from his/her hand, face down, to the hand of his/her partner's. After the partner bids, then the partner, in turn, gives three cards to the player bidding NIL. Note: If both partners bid NIL, then there is no exchange of cards.

Play - The eldest hand leads first and may lead with any suit, except spades. The suit of spades may not be led until the suit is "broken" by a spade on a previous trick (unless a player has no other suit to lead). Players must follow the suit if at all possible. A trick is won by the highest trump card or by the highest card of the suit that was led. Each trick is kept by the player winning it.

Scoring - The object of the game is to fulfill the contract bid by the partnerships, at the beginning of the game. If one partner has bid NIL, the player's contract and the partner's contract are scored independently of one another. The scores are then combined.

Tricks count as 10 points for each partnership if the contract is made, 10 points against the partnership if the contract is set. Note: Negative scoring is possible. Tricks that are won in excess of the contract are counted one point each. A bid of NIL scores a bonus of 100 points if successful or a penalty of 100 points if set.

If both partners bid NIL and are successful in making their contracts, then the partnership receives 200 points. However, there is no score if either or both are set.

By default, the game consists of 500 points. If both sides go over that amount in the same hand, then the side with the larger total score is the winner.

Main Menu

File

Exit

Game

New

Open

Change Rules

Records

Options

Animation

Automouse

Background

Text Color

Display Size

Win Trick

AutoPlay Last Trick

Change Player

Card Back

Card Fronts

Music

Sound Effects

Multiplayer

Listen

Network

Modem

Direct Connection

Connect

Network

Modem

Direct Connection

Chat

Game Menu

Game

[Save](#)

[Quit](#)

Options

[Animation](#)

[Automouse](#)

[Background](#)

[Text Color](#)

[Display Size](#)

[Win Trick](#)

[AutoPlay Last Trick](#)

[Card Back](#)

[Card Fronts](#)

[Music](#)

[Sound Effects](#)

Replay

[Hand](#)

[Trick](#)

View

[Rules](#)

[Score](#)

Multiplayer

[Chat](#)

Meet the Beginners



Foxy Roxy - is a twenty-six year-old bombshell from San Diego, California. You can find her hanging out on the beach, shopping at the mall, or going cruising around town in her cherry red convertible. Roxy just recently began to play MVP Spades and has found the beginner level quite challenging. She hopes that one day she might advance; but some goals may just be too far out of reach.



Hiroshi Chang - is an eighteen year-old originally from Hiroshima, Japan, but now resides in Mankato, Minnesota. Hiroshi has an abundant amount of talent for the sport of - you guessed it - water polo. When he's not in the pool, or hitting the books, you can now find him in front of his computer playing that fabulous game: MVP Spades. He has just begun to learn the trump game, but his coach is already talking about it. Everyday at practice, Hiroshi's coach is saying, "Leave that computer alone and stop playing that game. MVP Spades is too addicting! Practice, practice, practice!!!" Hiroshi has yet to decide which hobby he wants to perform, on a professional level. But, between you and me, I vote for MVP Spades.



Bobby Smith - This little boy has just recently begun playing on the computer. He is not quite familiar with how everything works, but he has found that he enjoys playing MVP Spades- a game his daddy taught him how to play. Bobby is able to strengthen his ability to play the game of spades, as well as make his daddy proud. This is quite an accomplishment for a seven year-old from Tulsa, Oklahoma. If you don't believe me, you can ask his dad.

Terms

Bid - An offer to contract to win a definite number of tricks .

Deal - To distribute an amount of cards to the players.

Eldest Hand - The player at the left of the dealer.

Follow Suit - Play a card of the same suit that is the lead card.

Hand - The cards that were originally dealt to a player.

Lead - The player to play the first card in the trick.

Nil - A bid to win absolutely zero tricks. If not met, then a penalty is awarded.

Set - The defeat of a contract.

Trick - A round of cards during play that each player has contributed one card to.

Trump - A privileged card or suit (in this case spades) that ranks higher than any card in any other suit.

(eldest hand)

The player at the left of the dealer.

(set)

The defeat of a contract.

(trump card)

A privileged card or suit (in this case, spades) that ranks higher than any card in any other suit.

Exit (File Menu)

To exit MVP Spades.

New (Game Menu)

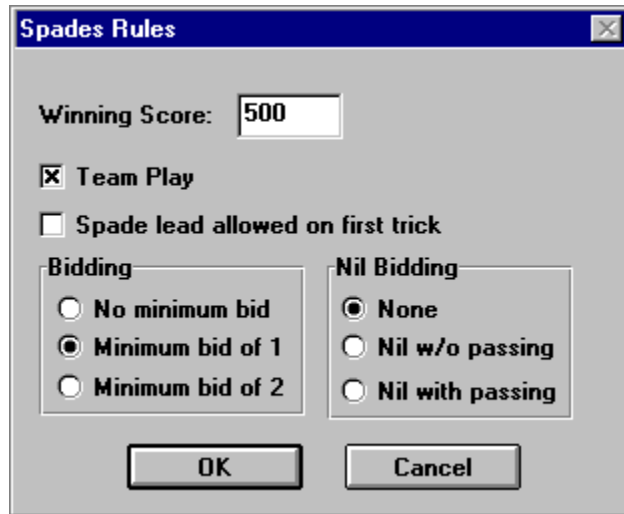
To begin a new game of MVP Spades. You will be prompted to choose a partner (if you are utilizing team play) and your opponents. There are three distinct skill levels: the first column of players are ranked as beginners, the second column as intermediate players, and the third column as experts, the latter requiring the most challenged play.



Open (Game Menu)

To play a game of MVP Spades that you previously have saved to disk. The rule options will be displayed to show you what the rules are. This dialog is read only. You play with the rules that were set when the game was saved, not the current rule options.

Change Rules

A screenshot of a 'Spades Rules' dialog box. The title bar is blue with the text 'Spades Rules' and a close button. The main area is light gray. At the top, 'Winning Score:' is followed by a text box containing '500'. Below this is a checkbox labeled 'Team Play' which is checked. Underneath is another checkbox labeled 'Spade lead allowed on first trick' which is unchecked. There are two groups of radio buttons. The first group, labeled 'Bidding', has three options: 'No minimum bid' (unchecked), 'Minimum bid of 1' (checked), and 'Minimum bid of 2' (unchecked). The second group, labeled 'Nil Bidding', has three options: 'None' (checked), 'Nil w/o passing' (unchecked), and 'Nil with passing' (unchecked). At the bottom are two buttons: 'OK' and 'Cancel'.

Winning Score - Set the number of points needed to win the game. Enter a value from 1 to 10,000.

Team Play - When this option is set, there are two partnerships (teams), each with two players. The players must win as many tricks as their combined bid. When this option is not set, each player must play for him/her self.

Spade Lead on First Trick - When this option is set, a spade can be led on the first trick. However, this does not constitute “breaking” the suit of spades. A spade cannot be led on the second trick until the suit is “broken” or the leader has only spades left in his/her hand.

Bidding - Choose from one of the following minimum bid options:

- * No minimum bid - A player can bid any number (0-13). See nil options below for information on a bid of zero.
- * Minimum bid of 1 - A player must bid at least 1. If the nil option is set, the player is still allowed to bid nil.
- * Minimum bid of 2 - A player must bid at least 2. If the nil option is set, the player is still allowed to bid nil.

Nil Bidding - A bid of nil is when the player states that he/she is going to take zero tricks. Winning any tricks is considered a bust and a penalty is awarded. The penalty consists of 100 points that are deducted from your score at the end of the game. Below are 3 options for nil bidding:

* None - A zero bid constitutes a normal bid. Scoring is done the same as in the case of any other bid. Note: A bid of zero is only allowed if the bidding option is set to no minimum bid.

* Nil w/o passing - A player may bid nil, but there is no exchange of cards between that player and his/her partner. He/she must win no tricks with the cards that were dealt into his/her hand.

* Nil with passing - A player may bid nil. If the team play option is set, then the team players exchange three cards. If both partners are bidding nil, then no exchange occurs.

Records

Spades Records			
Wins		Winning Percentage	
1. Bobby Smith	3	1. Brendon	1.000 (1-0)
2. Hiroshi Chang	1	2. Esther Little	1.000 (1-0)
3. Brendon	1	3. Bobby Smith	0.600 (3-2)
4. Kelly	1	4. Hiroshi Chang	0.500 (1-1)
5. Esther Little	1	5. Craig	0.500 (1-1)
6. I.M.A. Genius	1	6. I.M.A. Genius	0.500 (1-1)
7. Hannah Li	1	7. Hannah Li	0.500 (1-1)
8. Tiny Tim	1	8. Tiny Tim	0.500 (1-1)
9. Smart Alec	1	9. Smart Alec	0.500 (1-1)
10. Craig	1	10. Kelly	0.333 (1-2)

Computer players are displayed in blue.

OK << >> Reset Records

This is the location that records your wins and losses, as well as that of your opponent's. Also, your winning percentage is calculated and is ranked along with your opponent's. The computer players are shown in blue. You can reset all records by clicking the mouse on the "Reset Records" button.

Animation (Options Menu)

You may choose the speed of the card animation. You can choose between Normal and Fast.

Automouse (Options Menu)

This feature automatically moves the cursor for you. If you can follow suit, the cursor is moved to the lowest available card in that suit. Otherwise, the cursor is moved to the first valid card that you can play. Note: This is not a hint. It also moves to the OK button in dialog boxes. This option may be toggled by choosing the menu option.

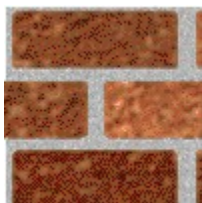
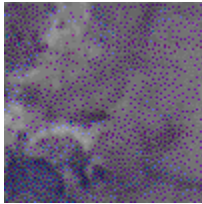
Change Player (Options Menu)



The player must enter his/her name and choose a portrait. To do this, press on the arrow button and see the three possible portraits. When you have made your selection, simply have it displayed in the box and select OK. Note: There is the option of not having this box appear each time the game is started. To select this function, click on the "Do not display" sentence on this screen. Also, if you wish to exit this screen, simply click on the cancel key.

Background (Options Menu)

MVP Spades allows you the opportunity to play a challenging game of spades on three different textured backgrounds. Simply select Texture and then choose from wood, marble, and brick.

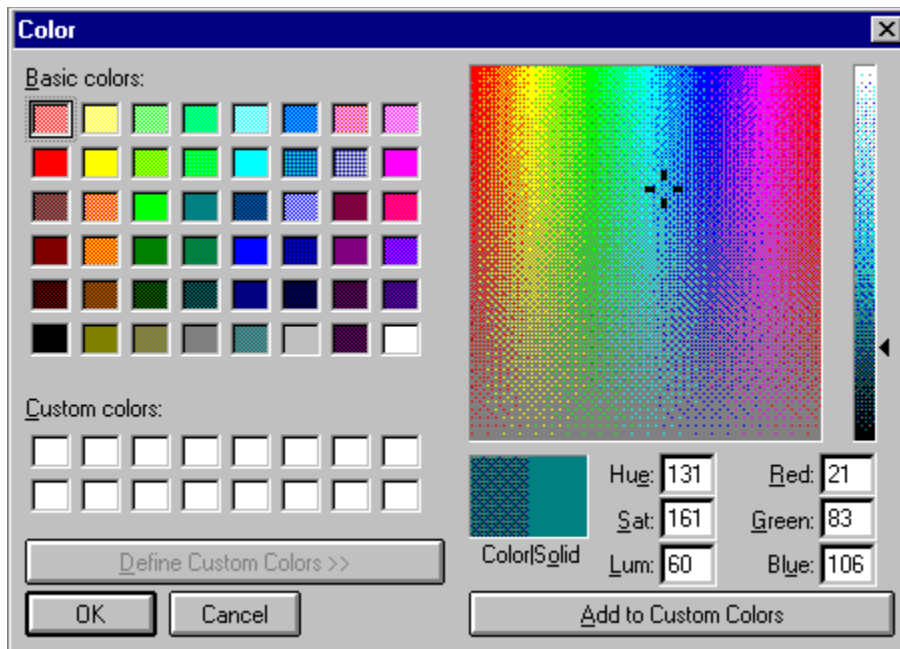


Wood

Marble

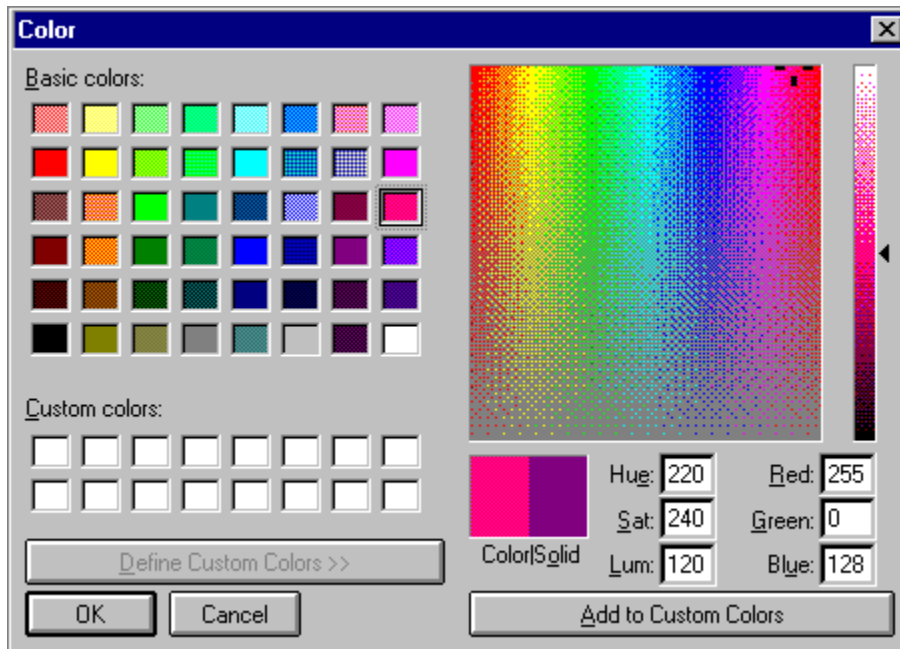
Brick

Likewise, you are able to choose any color from the Window's System Palette. To select this option, select Color and then pick the color that you want the background to become. That's it! It's that easy. But, be careful. You may need to set the text color in order to visualize some of the background colors that you choose.



Text Color (Options Menu)

MVP Spades allows you to choose the color of the text during your game of spades. You may choose the text color by selecting Text Color from the Options Menu. Note: Not all colors will show up good on all backgrounds.

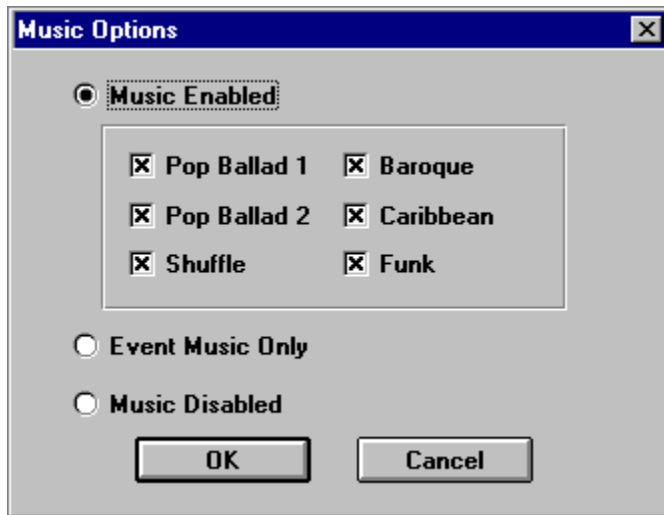


Card Back (Options Menu)



There are sixteen different card backs that come with MVP Spades. To choose the card back of your dreams, simply select the desired card back and press the OK button. Nothing to it.

Music (Options Menu)



There are a number of original music scores that come with MVP Spades. To select these, click on the Options Menu and select Music. If you would like to listen to music throughout the game, then select Music Enabled by clicking on it. If you would rather listen to music only after winning or losing a game, then select Event Music Only by clicking on it. Also, if you find some music that you prefer, you may select from one to six categories by selecting those buttons. When you are finished making your selections, press the OK button.

Sound Effects (Option Menu)

This option allows the player to enable or disable the sound effects. Sound effects are played when spades are broken, when you are set, when another player bids nil, when you bid nil and get it, and when you take your first trick after bidding nil.

Save (Game Menu)

This entitles the player to continue the game he/she is in the process of playing by saving it onto a disk.

Quit (Game Menu)

To end a game immediately. You will be prompted to save the game. Choose yes to save the game to a file, no to quit without saving, or cancel to return to the game. After quitting, you will return to the title screen.

Meet the Players

Beginner

Intermediate

Expert

Meet the Intermediates



Tex Mex - Now, here's a bad ol' boy from deep, down in Texas. I'd tell you his age, but I'd be a very unhappy camper. Tex does engage himself in some rather scrupulous behaviors. For example: he hunts kittens and puppies, and even small deer. When he's not entertaining himself in the above mentioned quests, you can find him playing the sensational game of MVP Spades where he has reached intermediate status.



Esther Little - Esther Little is a perky old lady from Boston, Massachusetts. She has many grandchildren and even a few great-grandchildren. She is so old that I am not even able to count that high, using all of my fingers and toes. But, just between you and me, I think that she was a witness to the invention of the wheel. When Esther isn't running after all those children that keep coming and visiting her, or stuck in that Boston traffic, you can find her at home, sitting with an afghan on one knee and her laptop on the other, refreshing herself with a game of MVP Spades. She plays well enough that she has earned intermediate status. She dares all you "YOUNG FOLK" to try and pick her off!



I. M. A. Genius - Ignathious Michael Alexander Genius is here, or I. M. A. Genius, for short. He is from a little unknown town, by the name of Germantown, Tennessee. It is located just outside of Memphis. Genius feels strongly that his nickname suits him, especially his playing style during a challenging game of MVP Spades. Just try for yourself and see if he is a true genius at heart.

Meet the Experts



Hannah Li - Hannah is one of the very few people that have the rank of expert for the MVP Spades computer game. She is one of the very best. Hannah is originally from Thailand and goes back to visit her family, on occasion. She has two daughters and a son, and she is a great mom- when her family can keep her away from the computer long enough. But, that's what happens when you have to maintain your expert status and train, train, train.



Tiny Tim - If Tim is anything, it sure isn't Tiny. Why, I once saw Tim break an iron pole in half. He did this while playing the fantastic MVP Spades computer game. You see, he bid nil and his opponent made him take a trick. Well, Tim wasn't happy, and neither was his opponent when Tim got through with him. That is one thing about Tim. He may have a little nickname- but his temper is huge. Incidentally, if you feel brave enough, play a round of MVP Spades with Tim. And, remember, he is the expert.



Smart Alec - Alec has always been a bright boy. He taught his cat, Felix, to sit up and beg for his supper. He has recently begun playing the soon-to-be award-winning game: MVP Spades and has found it truly stimulating. Never before has Alec had an opponent that he felt to be as worthy and dedicated as he. Since Alec has lived to be sixteen (and sometimes people wonder how he has survived that long) he desperately needs others who can stimulate him on an intellectual basis. Will you be the next victim?

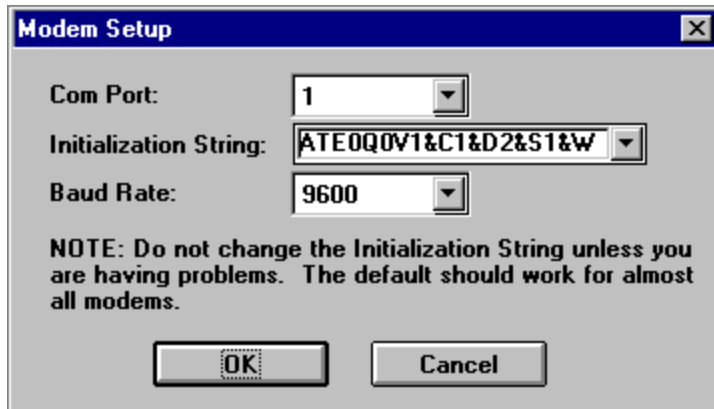
Listen Network (Multiplayer Menu)

Allows a remote player to connect to you over a NETBIOS network. You will be notified when a player establishes a connection. The player connecting to you chooses the rules, the opponents, and seating arrangements of the game to be played.



Listen Modem (Multiplayer Menu)

Allows a remote player to connect to you over a modem. Fill in the appropriate modem information. You will be notified when a connection is established. The player connecting to you chooses the rules, the opponents, and the seating arrangements of the game to be played.



The image shows a 'Modem Setup' dialog box with a blue title bar and a close button. It contains three configuration fields: 'Com Port' set to '1', 'Initialization String' set to 'ATE0Q0V1&C1&D2&S1&W', and 'Baud Rate' set to '9600'. Below these fields is a note: 'NOTE: Do not change the Initialization String unless you are having problems. The default should work for almost all modems.' At the bottom are 'OK' and 'Cancel' buttons.

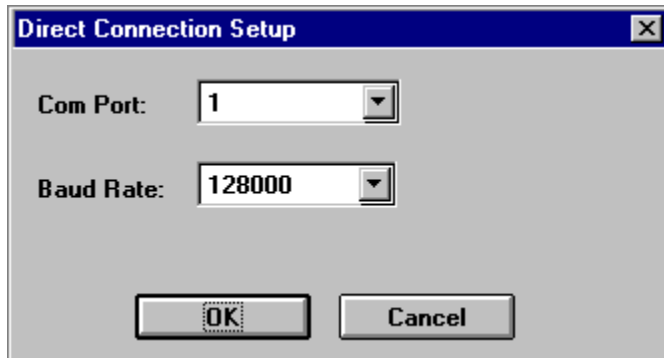
Com Port:	1
Initialization String:	ATE0Q0V1&C1&D2&S1&W
Baud Rate:	9600

NOTE: Do not change the Initialization String unless you are having problems. The default should work for almost all modems.

OK Cancel

Listen Direct Connection (Multiplayer Menu)

Allows a remote player to connect to you over a null modem cable. You will need to specify the port where the null modem cable is located, as well as the baud rate. You should be able to leave the baud rate at the default setting of 128,000. You will be notified when a connection is established. The player connecting to you chooses the rules, the opponents, and the seating arrangements of the game to be played.

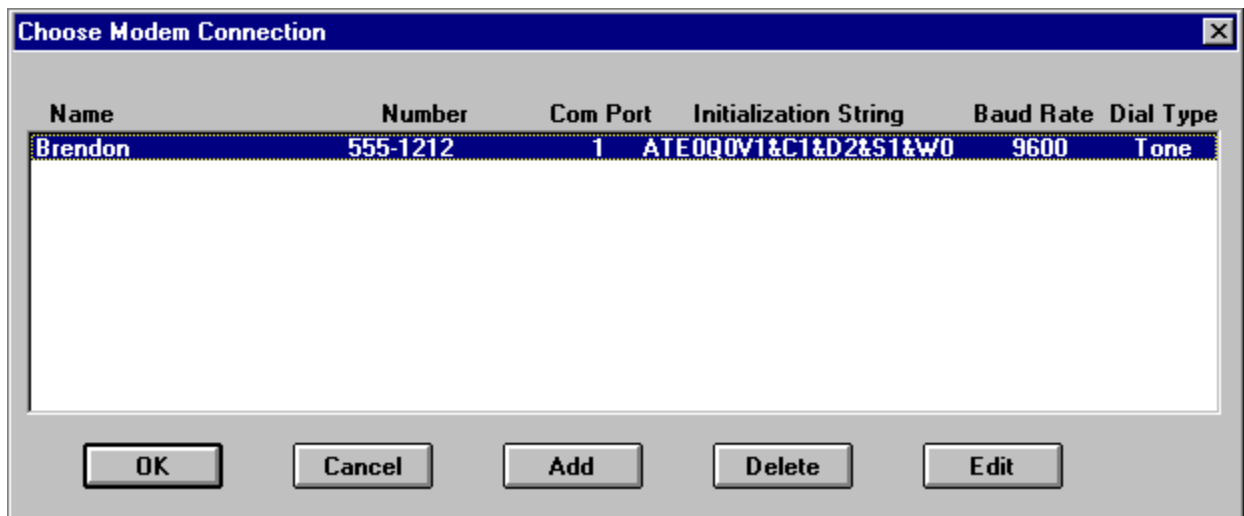


Connect Network (Multiplayer Menu)

This allows you to connect to a player on a NETBIOS network. You can connect to 1 to 3 additional players. The remote player must have already done a Listen Network from the Multiplayer Menu. Choose the name of the player from the list and click OK. The connection will be established. Place the player in the appropriate seat. You are always SOUTH, so you can select either WEST, NORTH, or EAST. You can then choose the rules for the game to be played.

Connect Modem (Multiplayer Menu)

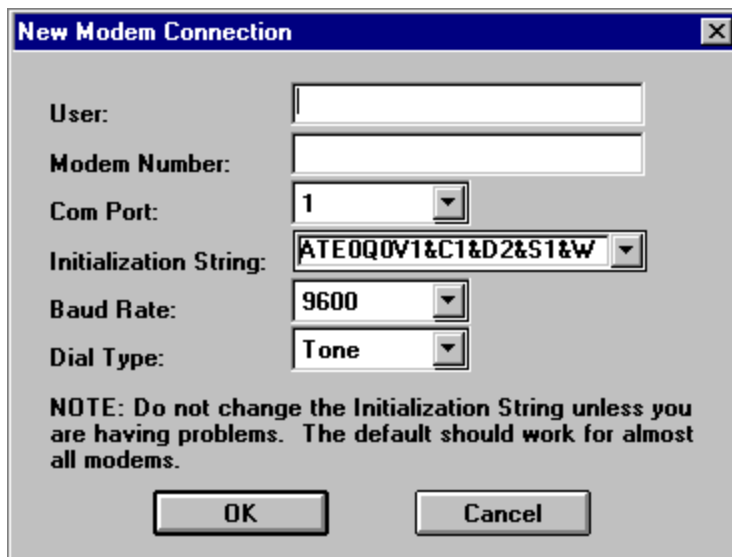
This allows you to connect to a remote player using your modem. The remote player must have previously selected Listen Modem from the Multiplayer Menu. Add their name, number, and modem information into your directory. Select the player from that list to connect to, and click on the OK button. The connection will be established. Place the player in the appropriate seat. You are always SOUTH, so you can select either WEST, NORTH, or EAST. You can then choose the rules for the game to be played.



The "Choose Modem Connection" dialog box features a table with the following data:

Name	Number	Com Port	Initialization String	Baud Rate	Dial Type
Brendon	555-1212	1	ATE0Q0V1&C1&D2&S1&W0	9600	Tone

Below the table are five buttons: OK, Cancel, Add, Delete, and Edit.



The "New Modem Connection" dialog box contains the following fields and controls:

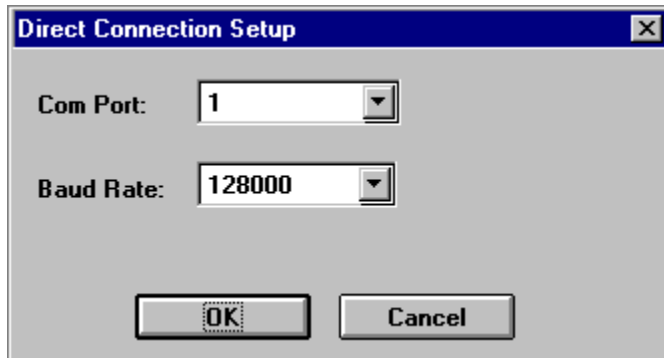
- User:
- Modem Number:
- Com Port:
- Initialization String:
- Baud Rate:
- Dial Type:

A note at the bottom states: "NOTE: Do not change the Initialization String unless you are having problems. The default should work for almost all modems."

At the bottom are two buttons: OK and Cancel.

Connect Direct Connection (Multiplayer Menu)

This allows you to connect to a remote player using a null modem cable. You will need to specify the port where the null modem cable is located, as well as the baud rate. You should be able to leave the baud rate at the default setting of 128,000. The connection will be established. Place the player in the appropriate seat. You are always SOUTH, so you can select either WEST, NORTH, or EAST. You can then choose the rules for the game to be played.



Chat (Multiplayer Menu)

This allows public communication at anytime. Choose chat from the Multiplayer Menu to display the chat dialog box. Enter the text that you want to send and click on the send button. The message will be displayed on all of the player's screens.

Win Trick (Options Menu)

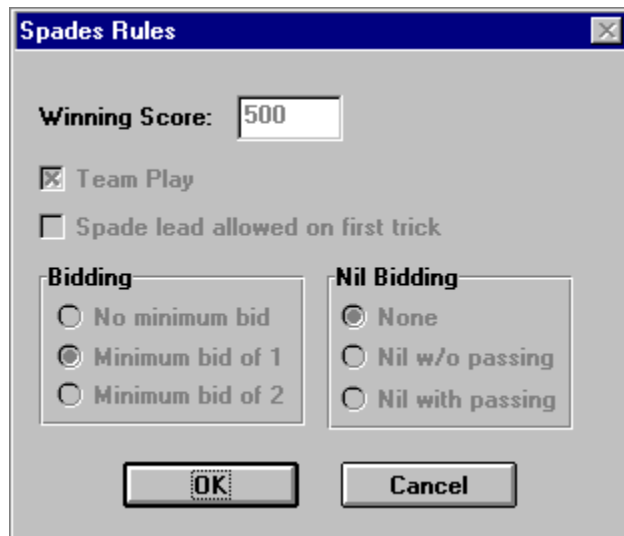
This feature allows you to choose whether or not you want the Win Trick dialog to disappear on its own. If set to Wait for OK, then you must click on OK before proceeding on to the next trick. You can also choose from 1, 2, or 3 seconds, in which case the box will automatically disappear after the allotted time. Note: you are still able to press the OK button to proceed to the next trick.

AutoPlay Last Trick (Options Menu)

This feature allows the last trick in the hand to be played automatically. Choose this menu option to enable or disable this feature.

Rules (View Menu)

Choosing this menu item during a game allows you the ability to view the rule settings. You cannot change any rules during the play of a game.



The image shows a Windows-style dialog box titled "Spades Rules". It has a blue title bar with a close button in the top right corner. The main area is light gray and contains the following controls:

- Winning Score:** A text box containing the number "500".
- Team Play:** A checked checkbox.
- Spade lead allowed on first trick:** An unchecked checkbox.
- Bidding:** A group box containing three radio buttons:
 - ☐ No minimum bid
 - ☒ Minimum bid of 1
 - ☐ Minimum bid of 2
- Nil Bidding:** A group box containing three radio buttons:
 - ☒ None
 - ☐ Nil w/o passing
 - ☐ Nil with passing
- Buttons:** "OK" and "Cancel" buttons at the bottom.

Score (View Menu)

Choosing this menu item during a game allows you to view the score. This feature also displays the bidding and the tricks taken to date.

A screenshot of a 'Score' window from a game. The window has a blue title bar with the text 'Score' and a close button. The main area is light gray and contains a table with five columns: 'Team', 'Bid', 'Won', 'Score', and 'Total'. There are two rows of data. The first row is for 'Team 1' (Brendon and Esther Little) with a bid of 4, won 4 tricks, a score of 0, and a total of 377. The second row is for 'Team 2' (Smart Alec and Hannah Li) with a bid of 6, won 2 tricks, a score of 0, and a total of 280. An 'OK' button is at the bottom center.

	Bid	Won	Score	Total
Team 1 Brendon and Esther Little	4	4	0	377
Team 2 Smart Alec and Hannah Li	6	2	0	280

OK

Display Size (Options Menu)

Choosing this menu item allows you to set the display area used by the game. Choose from one of the following options: 640x480, 800x600, or 1024x768.

Note: Your Windows display setting must be at least this large or you will not be able to see the entire play area.

Card Fronts (Options Menu)

There are two different card fronts that come with MVP Spades. To choose the desired card front, simply select the card front and press the OK button.



Hand (Replay Menu)

Choose this option to replay the current hand. Upon making this selection, you will return to the bidding phase.

Trick (Replay Menu)

Choose this option to replay any trick in the current hand.



